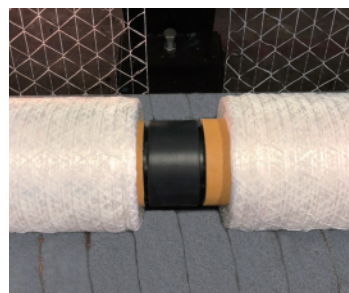
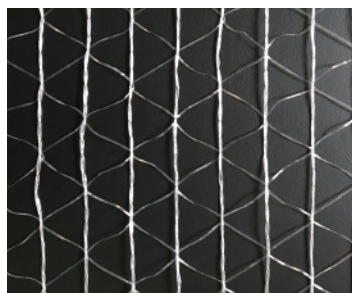
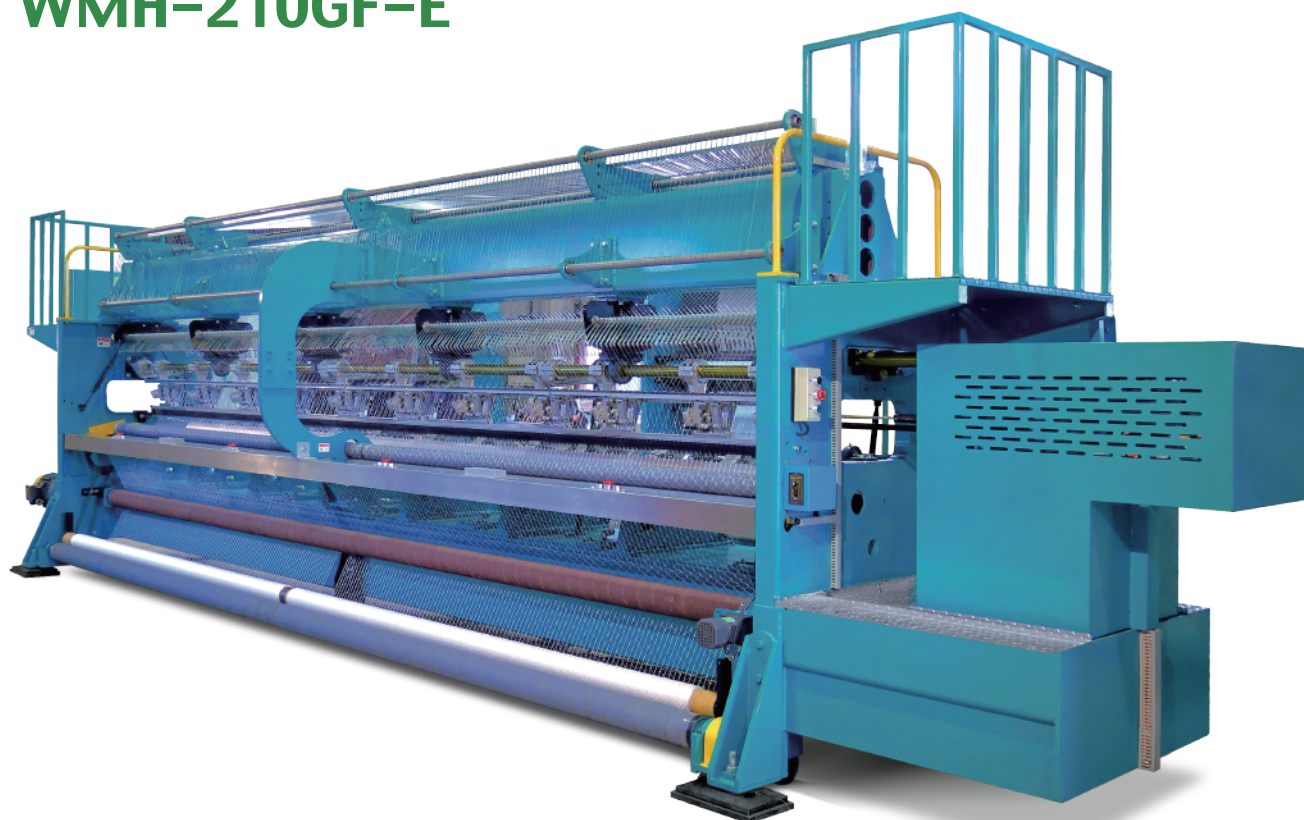


■ WMH-210GF-E



WMH-210GF-E

Bale Warp Net Raschel Machine

WEI
MENG

Specifications

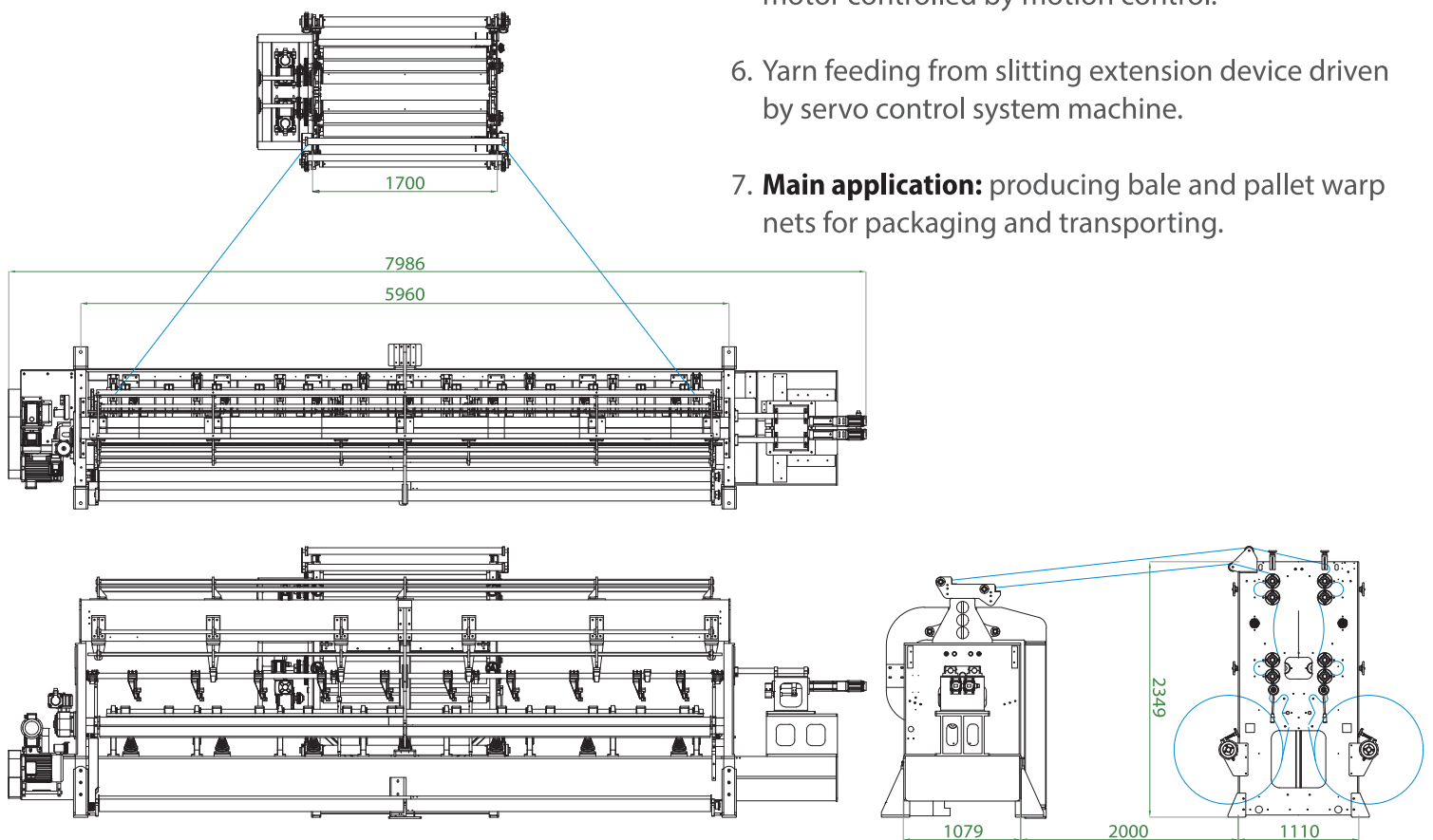
MODLE	WMH
Applicable Yarn	HDPE Flat Yarn
Working Width	210 inches
Machine Gauges	1 needle per inch
Warp Supply System	from : slitting extrusion machine
Performance	500-600 RPM
Number of bars	2-3 bars
Main Motor	7.5 kW
Machine Weight	8000 kgs

Machine Model :

WMH-210GF-E

The main characteristic of machine and specification :

1. The machine working width 210 inches (5334mm)
2. **Machine gauges:** E6/6 (1 needle per 25.4mm)
3. **Knitting elements:** single needle bar, knock-over comb bar and 3 ground bars.
4. **Pattern drive:** Electronic guide bar motion control system.
5. **Fabric take-up:** 4 roller system driven by geared motor controlled by motion control.
6. Yarn feeding from slitting extension device driven by servo control system machine.
7. **Main application:** producing bale and pallet warp nets for packaging and transporting.



www.weimeng.com.tw

Designed by Polaris 2018-08, +886-4-24517070

WEI MENG INDUSTRIAL CO., LTD.

No. 17-3, Neighborhood 2, Chilan Vil., Xinwu Dist., Taoyuan City 32743, Taiwan

T. 886-3-497-2288 F. 886-3-497-2266 E. weimeng@ms14.hinet.net

